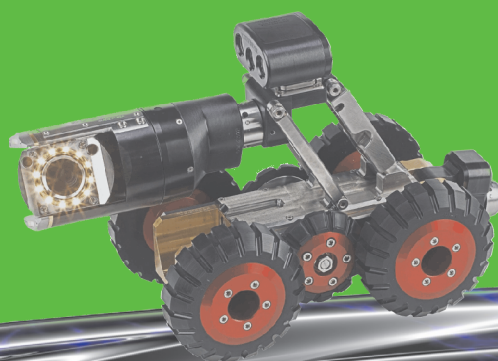


The need to maintain and upgrade sewer and wastewater pipeline infrastructure has become a paramount concern for municipalities faced with aging systems and growing populations. Video inspection technology can help you identify and prioritize maintenance issues, while improving service and reducing emergency maintenance costs.



VIDEO INSPECTION SERVICE



PO Box 49
Taylorville, IL 62568
217-287-2115
www.irwa.org



VIDEO

INSPECTION

SERVICE

IRWA is excited to introduce our new Video Inspection Service to our members.

THE EQUIPMENT

Pathfinder Pan & Tilt Camera

The Pathfinder is an ultra light sensitive camera that offers a maintenance-free LED lighting system for illuminating pipelines from 5"-24" in diameter. For larger diameter pipes an auxiliary light head is available for diameters up to 96". ARIES' Pan & Tilt technical advantage allows for the camera to rotate 360° continuously in a single direction.

Pathfinder Transporter

ARIES Pathfinder Mini Transporter, combined with the camera and built-in standard camera lift, will work in pipe sizes from 5" to 24".

THE SOFTWARE

IRWA will use the ARIES PipeWorks Pro state-of-the-art data management system. PipeWorks Pro uses MPEG compression for capturing live camera inspections for an all-digital solution that allows for an unlimited number of defects, pictures and videos to be collected per pipeline inspection. All acquired information and graphics can be exported into other applications.

THE FEE

The charge for this service is a minimum \$350 base "maintenance fee" for simple and short duration one-day projects. Large scale project cost, taking more time to complete, will be based on a per foot charge of linear sewer lines inspected. These fee determinations are at the discretion of IRWA, and will be discussed with system personnel prior to any project contract being submitted to the utility.

A contract must be signed in advance of the inspection. Upon completion, your system will be invoiced for the services and will also receive a detailed report including diagrams of the inspection features, and a DVD for your references.

For more information, or to schedule an inspection of your system, please call our office at 217-287-2115 or visit our website: www.ilrwa.org

